

More than 200 references

Security issues in hospitals are very specific and needs may be contradictory.

As a public place with a high volume of traffic, hospitals must be able to prevent theft or damage to expensive equipment, protect sterile areas or isolate dangerous products.

The surface of buildings, the management of staff and the important flow to optimize are also issues to consider.

Through its hardware and software solutions, TIL TECHNOLOGIES can meet all the needs of healthcare institutions.

#### TIL ALREADY EQUIPS

#### HOSPITALS

- La Pitié-Salpêtrière (Paris)
- Henri Mondor (Paris)
- Lariboisière (Paris)
- Hôpital Nord (Marseille)
- La Conception (Marseille)
- St Joseph (Marseille)
- Hospices Civils de Lyon
- Hôpitaux Universitaires de Strasbourg
- Bordeaux
- Rennes
- Nice
- Brest
- Toulouse
- Orléans
- Montreuil
- Aix-en-Provence
- Beauvais
- Perpignan
- Montauban
- Villeneuve-st-Georges
- Carcassonne
- Arles
- Dôle

#### RESEARCH Centres

- Institut National de Veille Sanitaire - Saint Maurice
- CNRS BIO-RAD - Montpellier
- CNRS - Banyuls-sur-Mer
- Fondation MERIEUX - Lyon
- BIOTRIAL - Rennes
- CEA - Fontenay-aux-Roses
- LILLY - Suresnes
- JOHNSON & JOHNSON - Martillac
- SANOFI AVENTIS - Montpellier, Avignon, Porcheville, Casablanca
- ARKOPHARMA - Carros
- BOIRON - Ste-Foy-Les-Lyon, Les Olmes,

#### SPECIALIZED INSTITUTIONS

- Bâtiment Psychiatrique La Teppe - Tain l'Hermitage
- UHSA Le vinatier - Lyon
- Unité pour malades difficiles - Albi
- Nombreux EHPAD et MAPAD à travers la France

## HEALTHCARE & HOSPITALS SECURITY



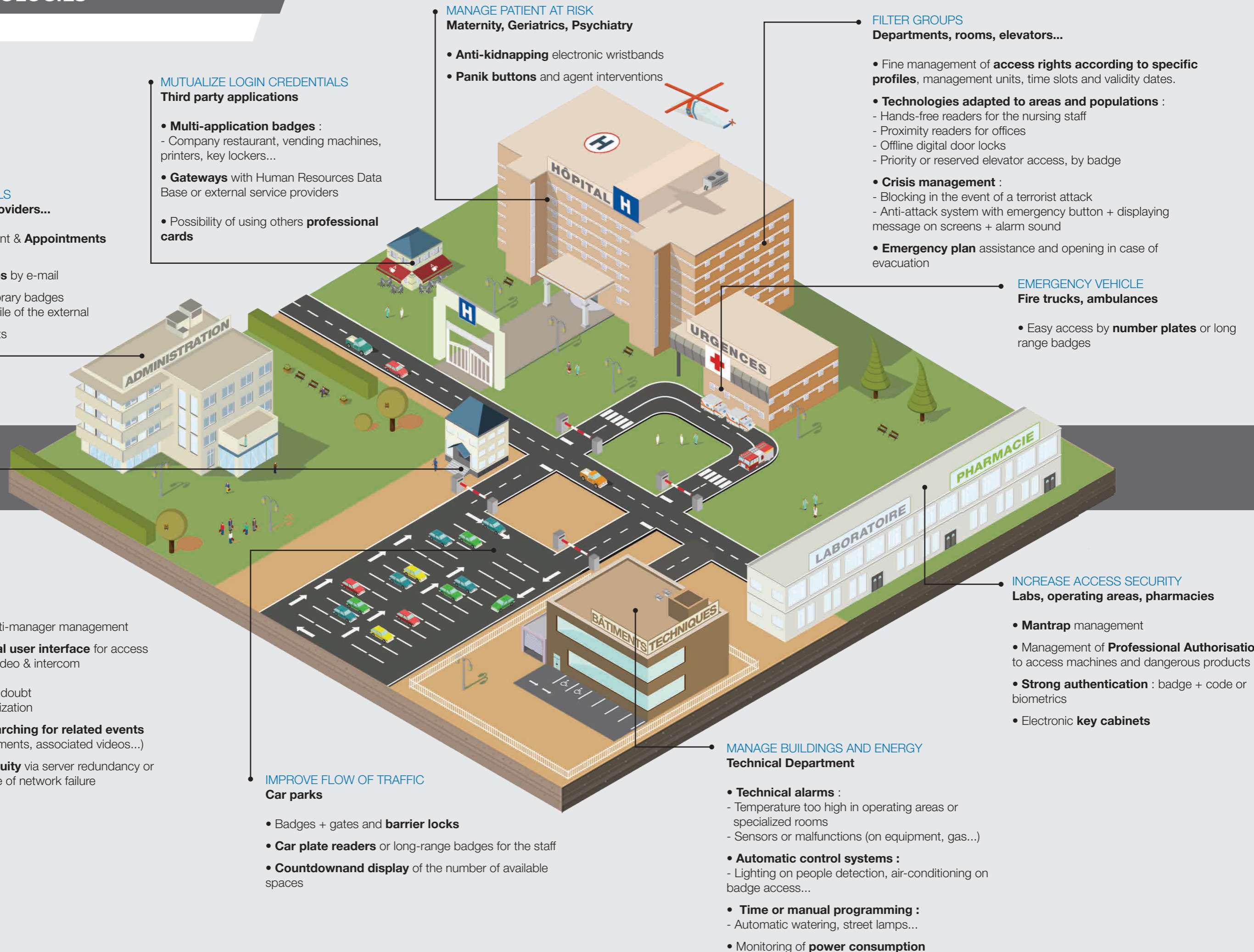
AGILE SOLUTIONS  
FOR EVERY SECTOR



MADE IN  
FRANCE

**TIL TECHNOLOGIES**

ELECTRONIC SECURITY SYSTEMS



**MANAGE EXTERNALS**

**Visitors, service providers...**

- Visitors management & **Appointments validation**
- Sending **QR-Codes** by e-mail
- Allocation of temporary badges according to the profile of the external
- Lockers and escorts

**MUTUALIZE LOGIN CREDENTIALS**

**Third party applications**

- **Multi-application badges** :
  - Company restaurant, vending machines, printers, key lockers...
- **Gateways** with Human Resources Data Base or external service providers
- Possibility of using others **professional cards**

**MANAGE PATIENT AT RISK**

**Maternity, Geriatrics, Psychiatry**

- **Anti-kidnapping** electronic wristbands
- **Panik buttons** and agent interventions

**FILTER GROUPS**

**Departments, rooms, elevators...**

- Fine management of **access rights according to specific profiles**, management units, time slots and validity dates.
- **Technologies adapted to areas and populations** :
  - Hands-free readers for the nursing staff
  - Proximity readers for offices
  - Offline digital door locks
  - Priority or reserved elevator access, by badge
- **Crisis management** :
  - Blocking in the event of a terrorist attack
  - Anti-attack system with emergency button + displaying message on screens + alarm sound
- **Emergency plan** assistance and opening in case of evacuation

**EMERGENCY VEHICLE**

**Fire trucks, ambulances**

- Easy access by **number plates** or long range badges

**MONITOR**

**Security PC**

- **Multi-site** or multi-manager management
- **Unique graphical user interface** for access control, intrusion, video & intercom
  - Remote openings
  - Removal of visual doubt
  - Night-time centralization
- Archiving and **searching for related events** (alarms, staff movements, associated videos...)
- **Business continuity** via server redundancy or offline mode in case of network failure

**IMPROVE FLOW OF TRAFFIC**

**Car parks**

- Badges + gates and **barrier locks**
- **Car plate readers** or long-range badges for the staff
- **Countdown display** of the number of available spaces

**MANAGE BUILDINGS AND ENERGY**

**Technical Department**

- **Technical alarms** :
  - Temperature too high in operating areas or specialized rooms
  - Sensors or malfunctions (on equipment, gas...)
- **Automatic control systems** :
  - Lighting on people detection, air-conditioning on badge access...
- **Time or manual programming** :
  - Automatic watering, street lamps...
- Monitoring of **power consumption**

**INCREASE ACCESS SECURITY**

**Labs, operating areas, pharmacies**

- **Mantrap** management
- Management of **Professional Authorisations** to access machines and dangerous products
- **Strong authentication** : badge + code or biometrics
- Electronic **key cabinets**